

*Surface To Air* - Scott Alario, Michael Childress, Benjamin Phelan  
Curated by RJ Supa

Foyer, from left:



Michael Childress  
*Remote Atmosphere (Surface)*, 2015  
Water dispersed pigment on canvas  
24 x 36" (60.96 x 91.44 cm)



Michael Childress  
*In the Distance: On the Horizon*, 2015  
Water dispersed pigment on canvas  
20 x 18" (50.8 x 45.72 cm)

Front room, from left:



Michael Childress  
*Remote Atmosphere (Green Scene with Heat Wave)*, 2016  
Water dispersed pigment on canvas  
46 x 42" (116.84 x 106.68)



Scott Alario  
*Marguerite and Plastic Moon*, 2012  
Archival pigment print mounted to rag board  
19 x 23 ¾" (48.26 x 60.33 cm)  
Ed. 1/3 + 1AP



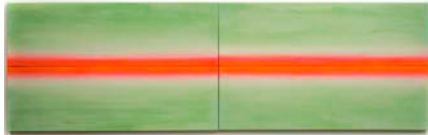
Benjamin Phelan  
*Sinusoidal Screen Memory Grating*, 2016  
Polyethylene foam, aluminum, LED pixel system.  
43.73 x 48 x 6.66" (111.07 x 121.92 x 16.91 cm)

Middle Room:



Scott Alario  
*Puddle Stomp*, 2012  
Archival pigment print mounted to dibond  
19 x 23 ¾" (48.26 x 60.33 cm)  
Ed. 1/3 + 1AP

Main room, from left:



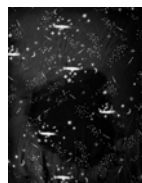
Michael Childress  
*Compound Panorama (Glow Mint)*,  
2016  
Water dispersed pigment on canvas  
24 x 80" (60.96 x 203.2 cm)



Michael Childress  
*Remote Atmosphere (Chartreuse Mist)*,  
2016  
Water dispersed pigment on canvas  
24 x 36" (60.96 x 91.44 cm)



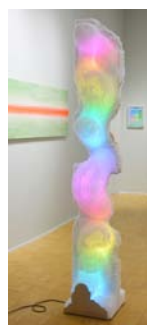
Scott Alario  
*Dolphin Dress*, 2015  
Archival pigment print mounted to  
dibond  
15 x 12" (38.1 x 30.48 cm)  
Ed. 1/2 + 1AP



Scott Alario  
*Star Sheets and Pee Spot*, 2013  
Archival pigment print mounted to rag  
board  
23 3/4 x 19" (60.33 x 48.26 cm)  
Ed. 3/3 + 1AP



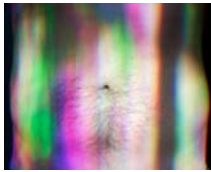
Benjamin Phelan  
*Transcription Casing Attachment Site 2*,  
2016  
Polyethylene foam, aluminum, LED  
pixel system.  
79.39 x 13.63 x 13.31" (201.65 x 34.62  
x 33.80 cm)



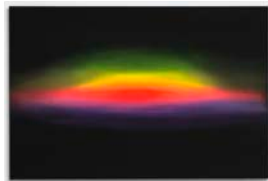
Benjamin Phelan  
*Transcription Casing Attachment Site 1*,  
2016  
Polyethylene foam, aluminum, LED  
pixel system.  
79.48 x 13.63 x 13.31" (201.87 x 34.62  
x 33.80 cm)



Michael Childress  
*Remote Atmosphere (Hot Red Haze)*,  
2016  
Water dispersed pigment on canvas  
24 x 36" (60.96 x 91.44 cm)



Scott Alario  
*Love Handles (Light and Squishy)*, 2016  
Archival pigment print mounted to rag  
board  
12 x 15" (30.48 x 38.1 cm)  
Ed. 1/2 + 1AP



Michael Childress  
*Remote Atmosphere (Rainbow Blast)*,  
2016  
Water dispersed pigment on canvas  
24 x 36" (60.96 x 91.44 cm)



Benjamin Phelan  
*Transcription Casing Attachment Site 3*,  
2016  
Polyethylene foam, aluminum, LED  
pixel system.  
79.29 x 13.63 x 13.31" (198.85 x 34.62  
x 33.80 cm)



Scott Alario  
*In Sagittarius, 2012*  
Archival pigment print mounted to rag  
board  
19 x 23 3/4 inches (48.26 x 60.33 cm)  
Ed. 2/3 + 1AP

Skylight:



Benjamin Phelan  
*Reaction Barrier Diffusion Assay*, 2016  
Polyethylene foam, corrugated plastic.  
79 x 71 x 1.7" (200.66 x 180.34 x 4.318  
cm)