



Radiator Gallery

Ensign Sgr A * curated by Over The Opening (OTO)
March 6 - April 10, 2015



MTAA

In Preparation for the Disappearance of MTAA (A), 2015
2 black hats, paint, monofilament, Ed 1/2
variable dimensions



Joianne Bittle

Mini-Spectacle "Realgar", 2013
Mixed media
8x10"



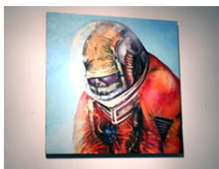
Joianne Bittle

Mini-Spectacle "Ammonite", 2013
Mixed media
6x6"



Joianne Bittle

Mini-Spectacle "Malachite", 2013
Mixed media
10x8"



Joianne Bittle

Moonman III - Hommage to Wiley Post,
and the Tomato Worm, 2012
Painting on panel
24x24"



Janice Sloane

Poe 2014-15
HD video 2:36 loop, Ed 1/5



Raphaele Shirley

86.48 colorbars/space blanket
LEDs, paint, wood, space blanket
67x67x5"



Amelia Bauer

Moonscape #1, 2011
Archival pigment print on metallic paper, Ed. 2/5
30 x 40"



Amelia Bauer

Moonscape #3, 2011
Archival pigment print on metallic paper, Ed. 1/5
30 x 40"



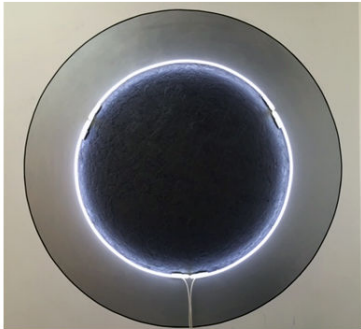
Aviram Cohen

Sarff's Sleep Machine, 2015
Directional speaker, contact microphone, mixer,
amplifier, fan, painted wall
variable dimensions



Joianne Bittle

The Extremophiles: Trilobite No. 2, 2010
13x16"
Graphite on paper



Raphaele Shirley

67 Double

Neon, paint and wood

67 x 67 x 5"



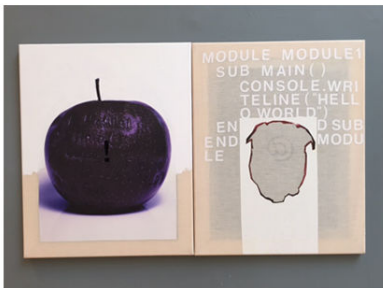
Jennifer and Kevin McCoy

Dominion, 2014

Oil on canvas background, color photography,

Video screen, and electronics

30x9.5x9"

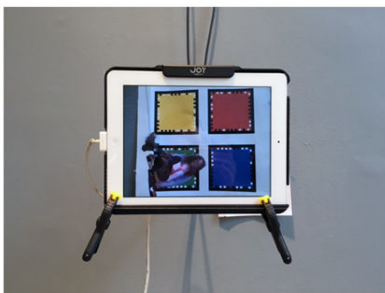


Nicholas Knight

Hello World (Who Let The Nerds Out?), 2014

Iron-on inkjet transfer, enamel, and vinyl on muslin

2 panels, 20 x 16" each



G.H. Hovagimyan

Teenage Zombie Avatar, 2015

iPad with mount, printed AR targets and custom software

24 x 36 x 12"

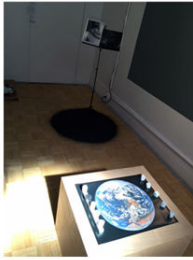


Esperanza Mayobre

What do we do with Columbus?, 2015

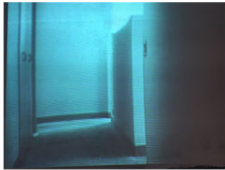
Media: Digital Print

Edition: 1/5



Esperanza Mayobre

It was not me at the Parthenon who changed the world, 2015
Mixed Media
Edition: N/A



Jennifer and Kevin McCoy

Airworld Probe
Video, Edition 1/3



Amelia Bauer

Extra Terrestrial #1, 2011
Archival pigment print on satin paper
30 x 45"



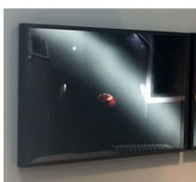
Nicholas Knight

Error 404 (from the group 13 In Conclusion)
Iron-on inkjet transfer on muslin
36 x 26" each



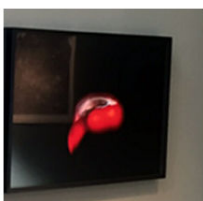
Nicholas Knight

White Out (from the group 13 In Conclusion)
Iron-on inkjet transfer on muslin
36 x 26" each



Janice Sloane

Surface, 2014
Digital C print, framed, Ed. 1/5
17 x 25"



Janice Sloane

Method, 2014
Digital C print 17" x 25" framed, Ed. 1/5
17 x 25"



Shannon Sberna

Hypnotizing Glasses, 2014

Glass with candy on shelf

10 x 10 x 3"

USD 500



Colleen Rae Smiley

Constellation, 2015

blue velvet with pearl buttons

Variable dimensions



Shannon Sberna

Who Ate Pegasus for Thanksgiving?, 2015

Waxed plaster on painted mount

2 x 2 x 4'

Wall Plaque (Room 1)

MTAA

First In Space (The Albert II Memorial Atrium), 2015

Etched vinyl

6 x 8"

Wall Plaque (Room 2)

MTAA

First In Space (Tsygan "Gypsy" and Dezik Gallery), 2015

Etched vinyl

6 x 8"

Wall Plaque (Room 3)

MTAA

First In Space (Laika Project Room), 2015

Etched vinyl

6 x 8"

Wall Plaque (Room 4)

MTAA

First In Space (The Able and Baker Exhibition Hall), 2015

Etched vinyl

6 x 8"